

IN PAVED AREAS SET COLLAR
AROUND MH RING 3/8" LOWER
THAN FINISH GRADE AT OUTER
EDGE AND INNER EDGE.
IN UNPAVED AREAS, SET
SMH LID 6" ABOVE EXISTING
GROUND OR AS DIRECTED

D&L A-1180 30" MANHOLE RING
AND COVER TO BE 1/8" BELOW
TOP OUTER EDGE OF CONCRETE
OR ASPHALT COLLAR

PROVIDE WHIRLYGIG OR PRECAST RINGS TO
BRING COVER TO PROPER ELEV.

(RINGS CANNOT BE USED TO
ADJUST MH COVER MORE THAN 1 FOOT)

GROUT RINGS IN PLACE WITH
CONCRETE AND SEAL WITH
RUBBERIZED SEAL (KENT SEAL,
RAM NECK OR EQUIVALENT)

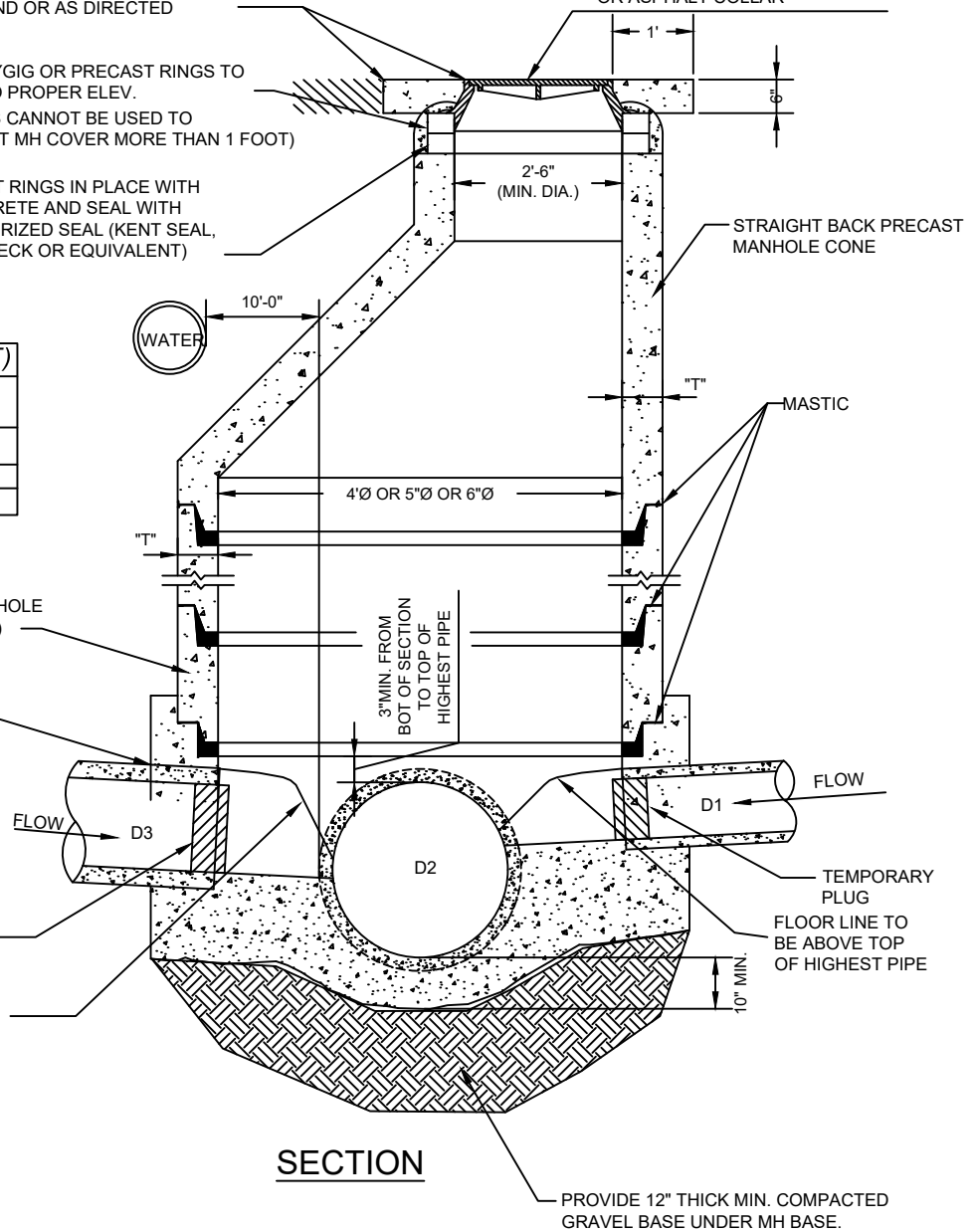
WALL THICKNESS (T)	
SMH DIA	T (INCHES)
4'	5"
5'	6"
6'	7"

STANDARD PRECAST MANHOLE
SECTIONS (DEPTH VARIES)

FLEXIBLE BOOT
RQD.

TEMPORARY
PLUG

LIP OF GROUT
CHANNEL



SECTION

NOTES:

1. IF GRADE ALLOWS, INVERTS OF D1 & D3 SHALL MATCH THE 0.75 DEPTH POINT OF D2. OTHERWISE AS APPROVED BY DISTRICT.
2. AFTER ALL GRADING AROUND MANHOLE HAS BEEN COMPLETED AND FINAL SURFACING IS IN PLACE, REMOVE DEBRIS AND TEMPORARY PLUGS OR PLYWOOD FROM INSIDE OF MANHOLES. SET MANHOLE FRAME AND COVER TO 1/8" BELOW FINISH GRADE AFTER FINAL STREET GRADING IS COMPLETE.
3. CONE AND WALL SECTIONS TO CONFORM TO ASTM C-478
4. PLUG OUTLET OF DOWNSTREAM MANHOLE UNTIL CONSTRUCTION IS COMPLETE.

NO SCALE



JORDAN BASIN
IMPROVEMENT DISTRICT

STANDARD MANHOLE DETAIL

DRAWN:	DESIGNED:	CHECKED:	APPROVED:
DATE AUG 2024	FILE NAME	DRAWING NAME SS-2A	